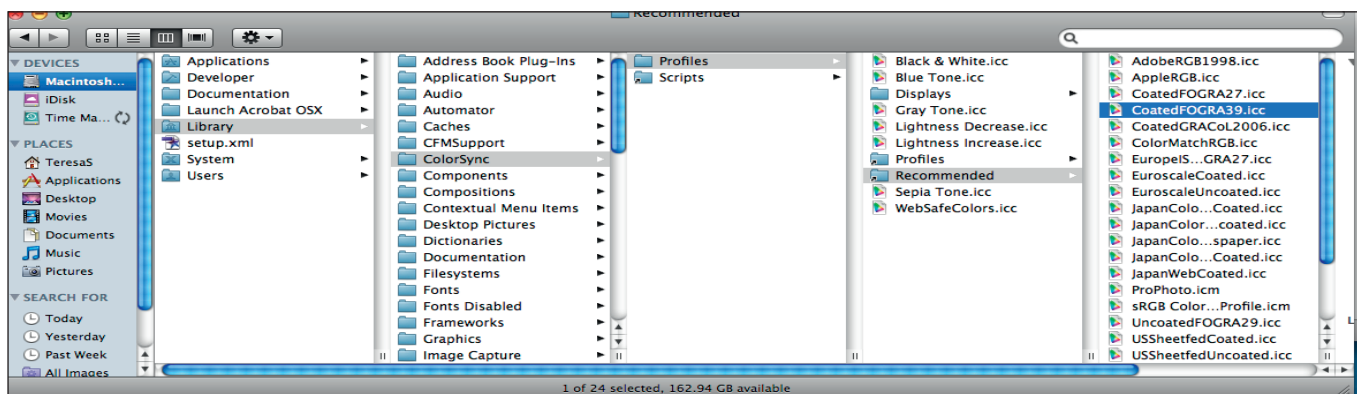


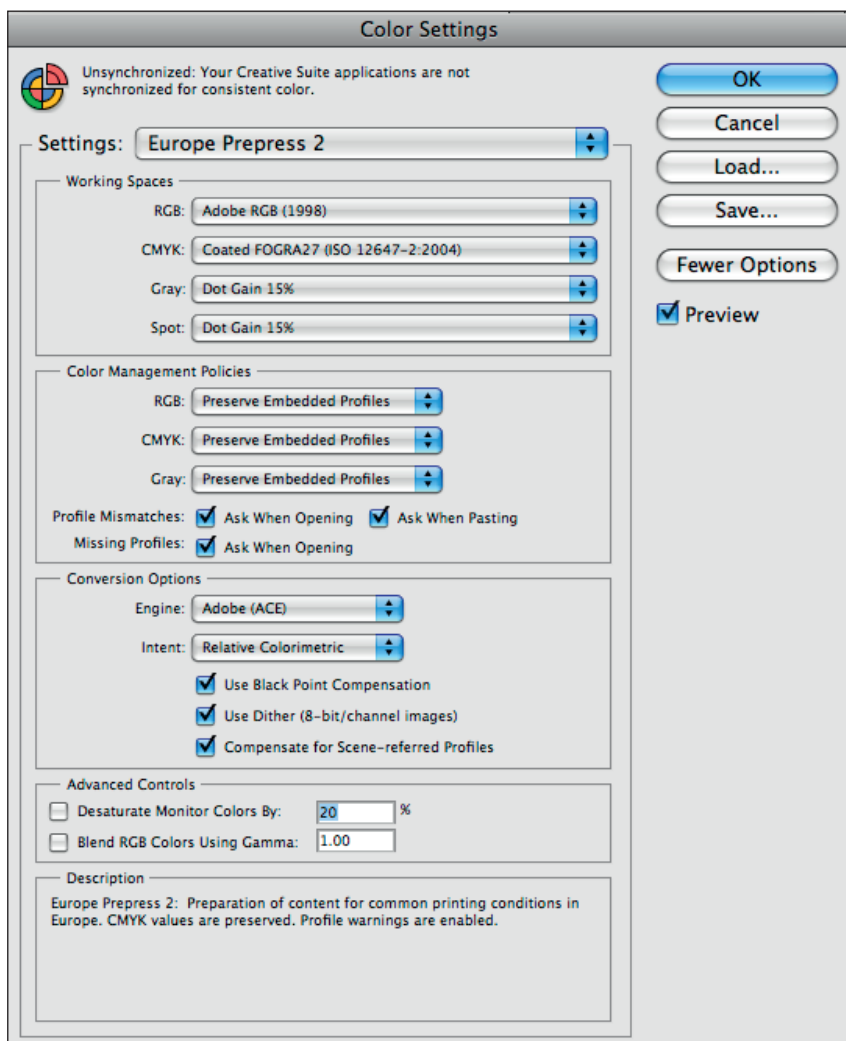
Colour Settings - Fogra 39 - Imago instructions

Shown in CS4 on Mac OS X

Colour profiles need to be used when converting from RGB to CMYK, when proofing digitally, and as the input and output colour spaces when working in Creative Suite and when creating PDFs. Once they are correctly set up and your Colour Settings have been appropriately customised it is all straightforward.



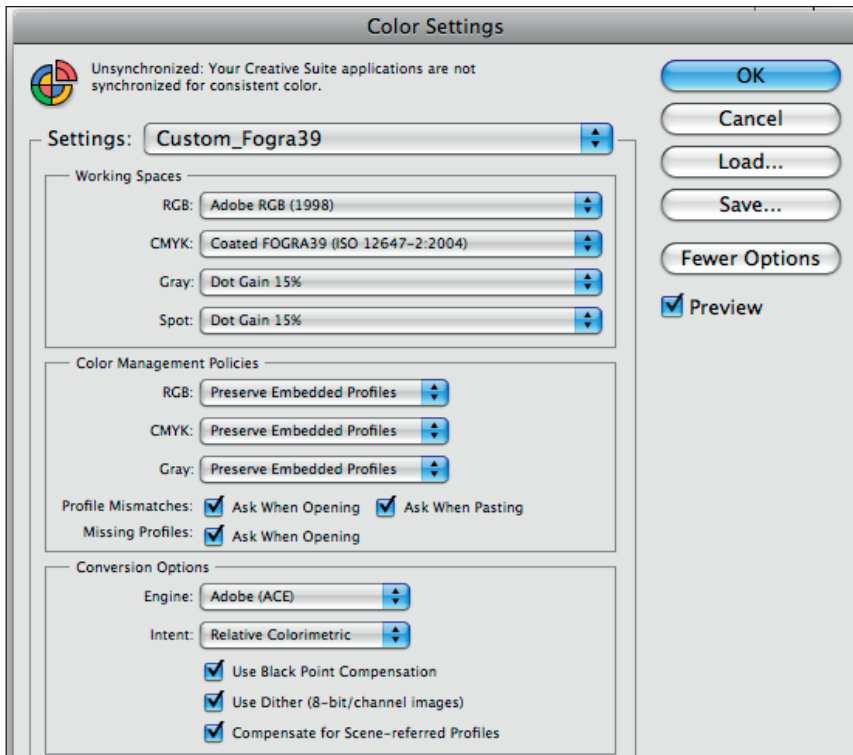
1. Place the Adobe Coated FOGRA39 profile you have downloaded from our website into **Library > ColorSync > Profiles**. It does not matter whether you use the main Library or the User Library. If you have a recent version of InDesign or Photoshop you may already have this profile, check under Recommended in Profiles. It shows up in the Colour Settings in Photoshop or InDesign as 'Coated FOGRA39 (ISO 12647-2:2004)' but when you place it or search for it through your folders in ColorSync and Profiles it shows up as 'CoatedFOGRA39.icc'



2. Photoshop - Colour Settings

Start setting up your Colour Settings in Photoshop, as only Photoshop allows you to access *any* colour profiles loaded onto your computer.

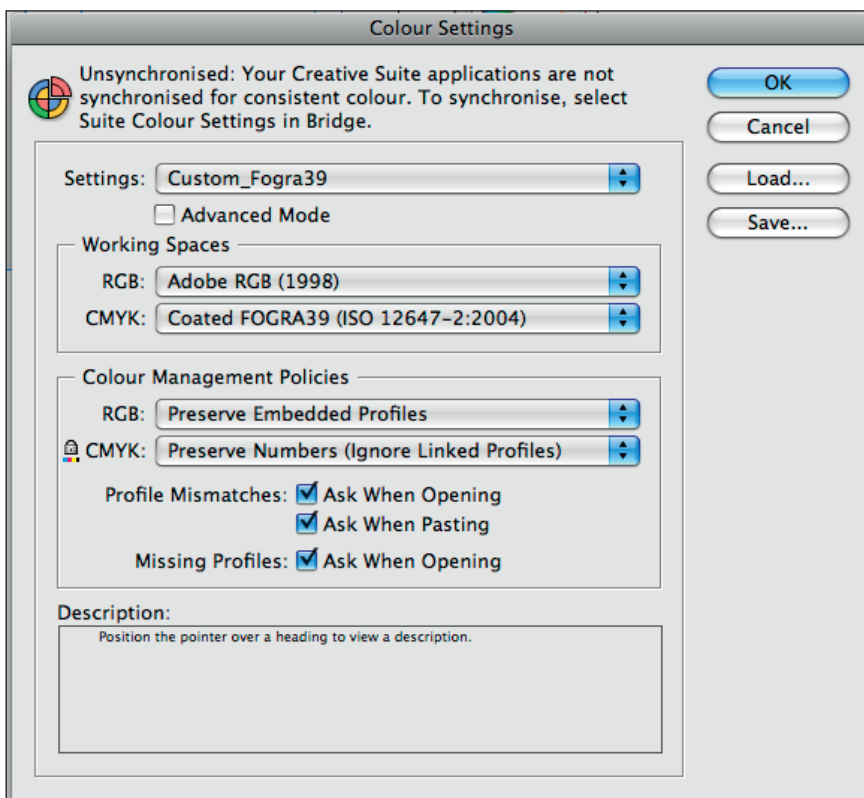
- In Photoshop > Edit Menu > Colour Settings.
- In **Settings**, start by selecting **Europe Prepress 2**. This is the best place to start as then you need to alter the least amount of details in the setting to get it correct for Fogra 39.
- Then click on **CMYK** under **Working Spaces** where it will have defaulted to Coated Fogra 27. This is now out of date and should not be used. Instead scroll through your profiles here until **Coated FOGRA39 (ISO 12647-2:2004)** shows up here.
- See next page.



3. Photoshop - Colour Settings

- With **Europe Prepress 2** showing up as your Colour Setting (as shown on page one)
- Click on **CMYK** in **Working Spaces** and scroll through your profiles until you find **Coated FOGRA39 (ISO 12647-2:2004)** - as shown on the left here.
- Keep all the other settings unchanged (ie the same as for the basic Europe Prepress 2.)
- Save and name your custom settings, eg as shown here as Custom_Fogra 39.

Showing altered Colour Settings in Photoshop CS4



4. InDesign - Colour Settings

In InDesign you can only select from one of the preset profiles, or one that you have already set up in Photoshop.

- InDesign > Edit Menu > Colour Settings.
- In **Settings**, either select the Custom_Fogra39 setting you have created above in Photoshop.
- Or, in **Settings** select the **Europe Prepress 2** setting to start with, and then in **Working Spaces** under **CMYK** change it to bring up the **Coated FORGA39 (ISO 12647-2:2004)** profile.
- Leave other settings unchanged, exactly as shown here. Preserve Numbers (Ignore Linked Profiles) is a particularly important setting to have correct under Colour Management Policies.
- Then save and name this as your Custom Fogra 39 profile.

Showing altered Colour Settings in InDesign CS4

In Bridge you can synchronize your colour settings so that you are using the same settings in Photoshop when converting and editing images, and in your InDesign layout pages.